



January 2012

Happy New Year! I can remember every January doing up the forms for the new year and thinking I would be more organized this year. As I filled out my yearly Staff Development Calendar, I was determined to try to be more creative with my programs to help the staff to understand the importance of their role in the prevention of infections. Thanks to belonging to ICNC I had resources, mentors and great ideas shared at the chapter meetings that I was able to take back to make my programs better.

As we start off 2012 I have three wishes for this coming year. My first wish is that we continue to share and support one another in our common goal of preventing infections. We need to attend our chapter meetings, sharing projects and expertise. New members need to be brought in and mentored.

My second wish is that we use the strength of our membership to be heard at the local and state level. We need to promote the importance of a full time infection preventionist, especially in long term care. It will only be a matter of time before certain infections acquired in long term care will not be reimbursed.

Lastly, my wish is for ICNC to sustain and grow. We need to increase our membership to give us the financial ability to provide more for our members - not to mention perhaps looking at commissioning studies to support the need for changing certain state statutes. The other requirement for sustainability is to have younger members willing to assume leadership roles at the chapter and state level. Many of us on the ICNC board are older and looking forward to retirement in the coming years. Please consider assuming a leadership role at the chapter or state level. We will be having elections on April 27th for new ICNC state leadership. If you think you have an interest in assuming more of a leadership role and have questions, please do not hesitate to contact any of us on the board. Kris

SAVE THE DATE: ICNC SEMINAR APRIL 27TH

at **The Aqua Turf** in Plantsville, CT. Your day will be filled with many interesting speakers, visiting with the vendors, networking with each other and a wonderful lunch.

WHAT'S HAPPENING?



Vacuum cleaners...sometimes make it worse!

Have you checked your facility's vacuum cleaner lately? I remember the vacuum cleaner at my old facility looked almost as old as me. A recent study in the American Chemical Society's Journal of Environmental Science and Technology showed that vacuum cleaners can increase levels of very small dust particles and bacteria in indoor spaces. It was found they can contribute to indoor air pollution by releasing into the air bacteria and dust that can spread infection and trigger allergies. It was found that vacuums with HEPA filters released only slightly lower levels of bacteria and dust. Newer and more expensive cleaners were found to be less polluting than older or less expensive models.



FDA restricts use of Cephalosporins in animals

due to concerns these practices may have contributed to the rise in resistant infections. This class of antibiotics will no longer be allowed to be routinely injected into broiler eggs and can not be used in lengthy dosing in cattle and swine.

TDR TB...Totally Drug Resistant TB is being reported with at least 12 patients in India. This was reported in a letter to the December journal Clinical Infectious Diseases. Lack of physician knowledge of proper TB treatment and lab capacity to test for resistance are cited as possible reasons for this frightening

phenomenon. *Cite: Zarir F et al. Totally Drug-Resistant Tuberculosis in India. Clin Infect Dis. advance access Dec. 21, 2011. doi: 10.1093/cid/cir889.*

NOTE: Speaking of TB...the 2011 TB Statistics that you use to complete your yearly TB Risk Assessment will not be available from CT DPH for a few weeks. When they are available it will be sent to the chapters.



Collecting specimens from urine catheters

Per HICPAC CAUTI Guidelines 2009

Specimen Collection

U. Obtain urine samples aseptically. **(Category IB)**

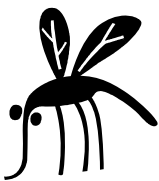
1. If a small volume of fresh urine is needed for examination (i.e., urinalysis or culture), aspirate the urine from the needleless sampling port with a sterile syringe/cannula adapter after cleansing the port with a disinfectant. **(Category IB)**
1. Obtain large volumes of urine for special analyses (not culture) aseptically from the drainage bag. **(Category IB)**

<http://www.cdc.gov/hicpac/pdf/CAUTI/CAUTIguideline2009final.pdf>

Day Care Influenza Vaccination Requirements

At a recent New London chapter meeting, one of the Infection Preventionists said that if she had known about the day care flu vaccine requirements, she would have sent reminders out to the staff. Even if your facility does not have a day care facility this requirement could affect staff who do not follow through getting their child(ren) vaccinated. The child(ren) will not be allowed in the day care which means your staff can not come to work! The regulation requires all children aged 6–59 months attending a child day care center, group day care home, or family day care home to receive at least one dose of influenza vaccine between September 1 and December 31st or they can not attend.

http://www.ct.gov/dph/cwp/view.asp?a=3141&q=387166&dphNav=|&dphNav_GID=1823



Bzzzzz....Microbes on Your Skin Attract

Mosquitoes according to a study at the Wageningen University in the Netherlands. It was found that people with a lower diversity of bacteria but lots of it on their skin was more attractive to mosquitoes. This could lead to the development of personalized methods for malaria prevention.

EDUCATIONAL PROGRAMS



<http://www.rmei.com/>



[TB 101 for Health Care Workers](http://www.cdc.gov/tb/webcourses/tb101/default.htm)

<http://www.cdc.gov/tb/webcourses/tb101/default.htm>

RESOURCES

Interim Guidance for Influenza Outbreak Management in Long-Term Care Facilities

<http://www.cdc.gov/flu/professionals/infectioncontrol/ltc-facility-guidance.htm>

CDC Blog for Long Term Care

<http://blogs.cdc.gov/safehealthcare/?cat=4379>



<http://www.healthcare.gov/compare/partnership-for-patients/resources/conditions.html#wave>



NOROVIRUS TOOL KIT!

<http://www.cdc.gov/hicpac/pubs.html#noro-tk>



CT DPH page on prevention of health care acquired infections.

<http://www.ct.gov/dph/cwp/view.asp?a=3136&q=491470>

Please do not forget to pay your \$35 dues!